

# 59 INNERBELT ROAD SOMERVILLE DATA CENTER



**12,000 RSF FOR LEASE**



# 12,000 RSF AVAILABLE

42U CABINETS

PRIVATE CAGES AVAILABLE

FREE WIFI

**FIBER:** Verizon, Light Tower, Comcast

**POWER PROVIDER:** Eversource Transformer  
#PMHI9462, rating KVA 300,  
Primary Voltage 13800 Volts Delta  
95 KV BIL, Secondary 480Y/277  
Volts 30KV BIL Weigh 4653

**ELECTRICAL EQUIPMENT:** **Emergency Generator:**  
Cummings Model # DFEK-4379049  
500KW, 625 KVA, 600 Amp 480  
Volt 3 Phase 4 Wire unit

**Main Service:**  
600 Amps 480 Volt 3 Phase 4 Wire

**Transfer Switch:**  
600 Amp 480 Volt 3 Phase 4 Wire

**Main Distribution Panel (MDP):**  
Rated at 800 Amps 480V 3 Phase  
4 Wire

**UPS:**  
Eaton UPS Model # 9390-160 Input  
480 Volt 3 Phase 3 Wire input 210  
Amps/Output 480 Volt 3 Phase 4  
Wire 193 Amps, 144 KW, 160KVA

**PDU:**  
MGE Model # PM126-42-150 input  
480C 3 Phase 3 Wire 185 Amps,  
output 120/208 Volt 3 Phase 4 Wire  
417 Amps

**FIRE PROTECTION:** Pre-Action Sprinkler System

**HVAC:** Four 15 ton Liebert CRAC UNITS

**PLUMBING:** 2" main water service

**TAX & CAM:** Real Estate Tax \$2.27  
Common building cost \$3.23  
\$5.50 PSF

**DISCLAIMER:** All information furnished regarding property for sale or lease is from sources deemed reliable but no warranty or representation is made as to the accuracy thereof and same is submitted subject to errors, omissions, change of price, rental or other conditions prior to sale or lease, or withdrawal without notice.



## SURROUNDED BY AMENITIES



COUNTLESS RESTAURANT AND BAR OPTIONS



SET WITHIN A NEIGHBORHOOD OF CORPORATIONS



CONVENIENTLY SITUATED BETWEEN ASSEMBLY ROW & TWIN CITY PLAZA

## EASILY ACCESSIBLE TO DOWNTOWN



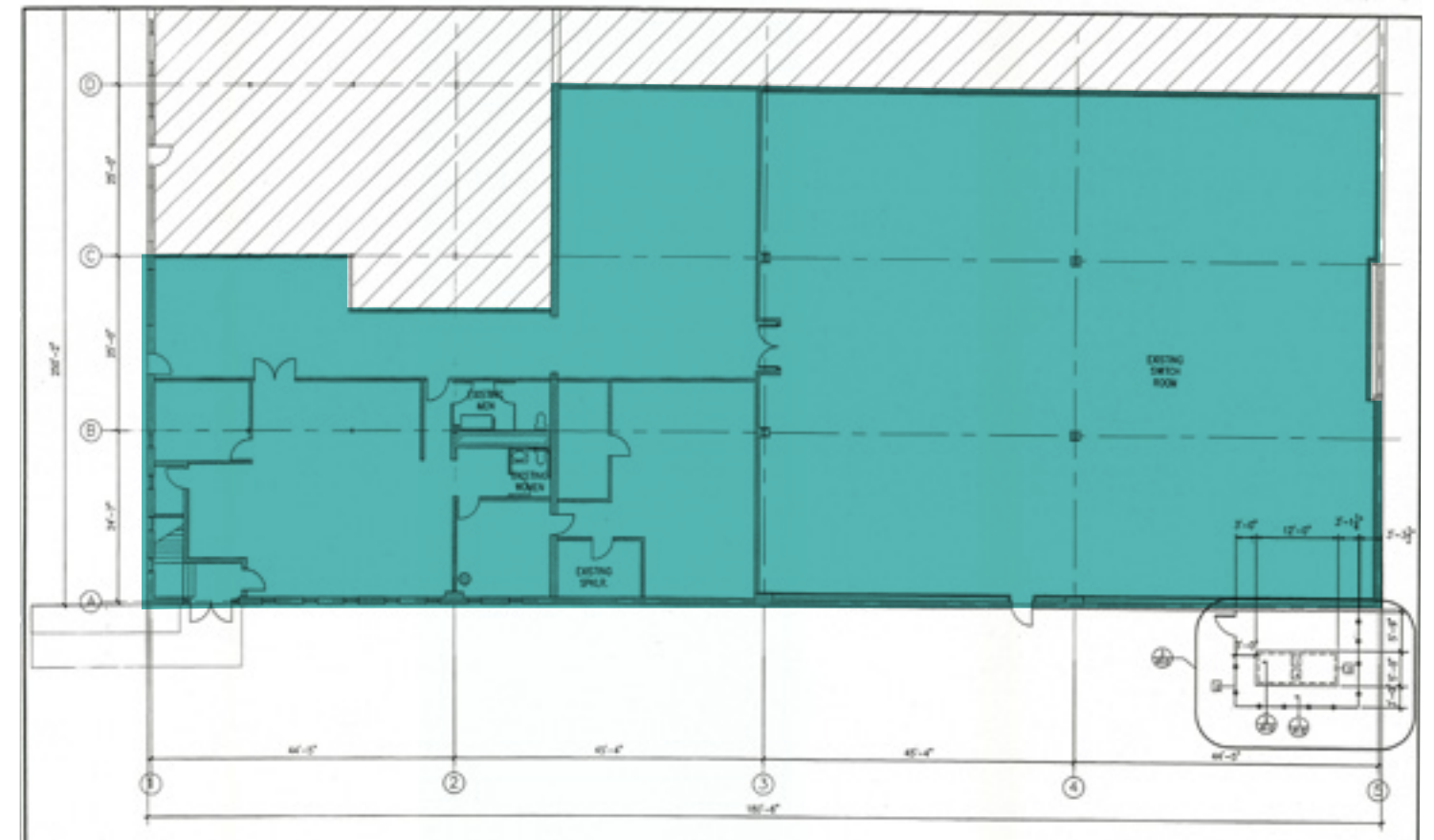
10 MINUTE WALK TO SULLIVAN SQUARE



EASY ACCESS TO I-93 AND ROUTE 28



STEPS FROM MBTA BUS STOPS ON CAMBRIDGE STREET



# 59 INNERBELT ROAD SOMERVILLE DATA CENTER



**CONTACT US TO ARRANGE A TOUR**

**TREY AGNEW**

617.457.3363

[tagnew@hunnemanre.com](mailto:tagnew@hunnemanre.com)

**PATRICK GRADY**

617.457.3278

[pgrady@hunnemanre.com](mailto:pgrady@hunnemanre.com)



303 Congress Street | Boston, MA 02210 | 617.457.3400 | [hunnemanre.com](http://hunnemanre.com)